

[www.pinecreekapartmentshomes.com](http://www.pinecreekapartmentshomes.com)

903.609.8103

3555 Ruby Way

Paris, TX 75460



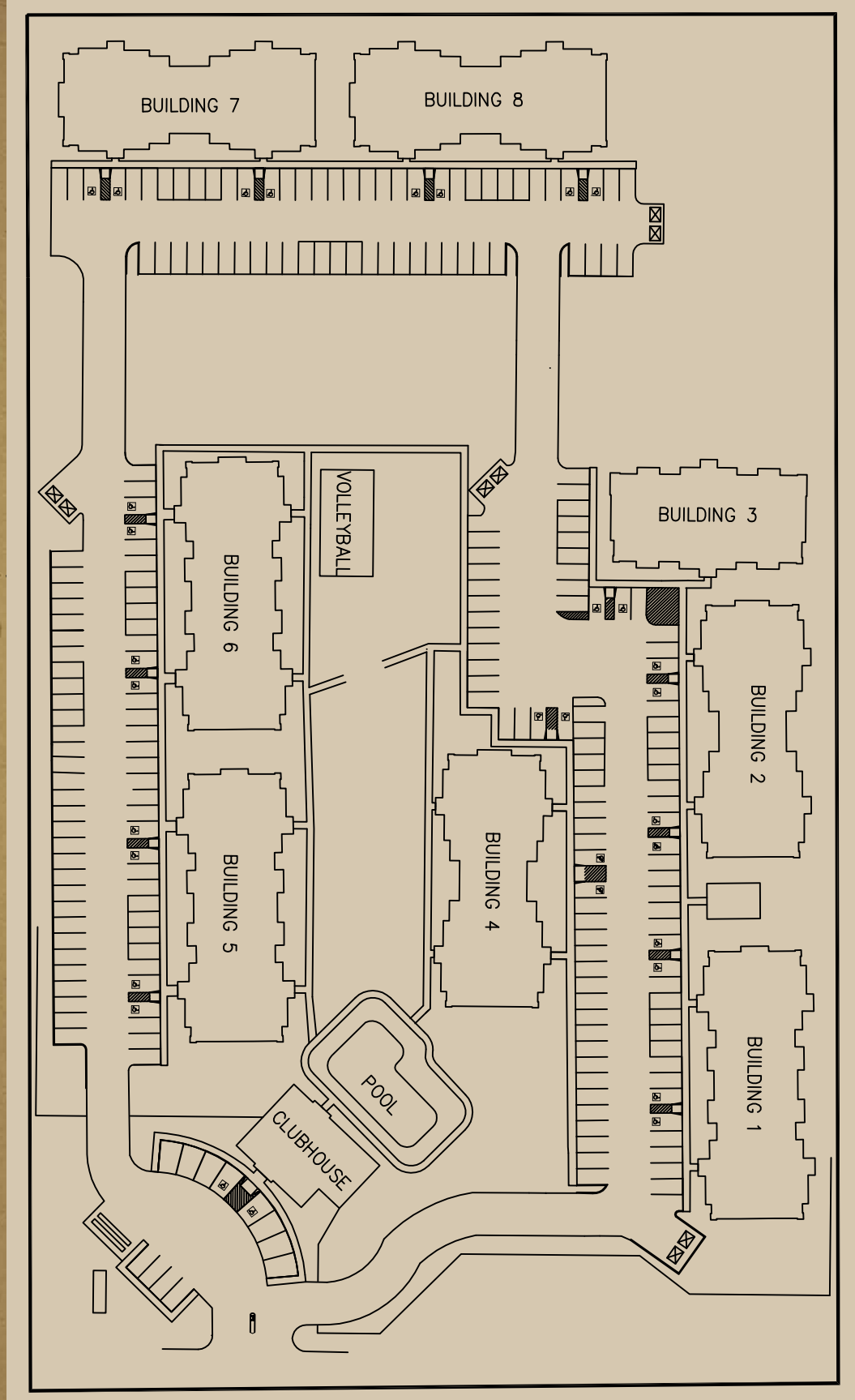
*Excellence at its best.*

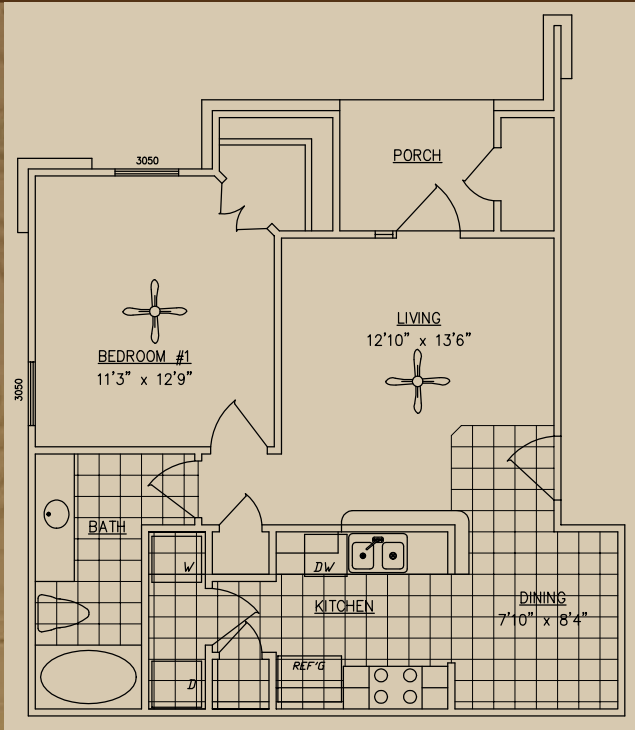
Welcome to Pine Creek Apartment Homes, an address for those who appreciate an exquisite and comfortable quality of life.

Every so often, an apartment community emerges that seems as though it was built especially for you. Pine Creek is that kind of community.

From the moment you walk in to one of our exceptional apartments, you can't help but be impressed by all the custom details you'll find.

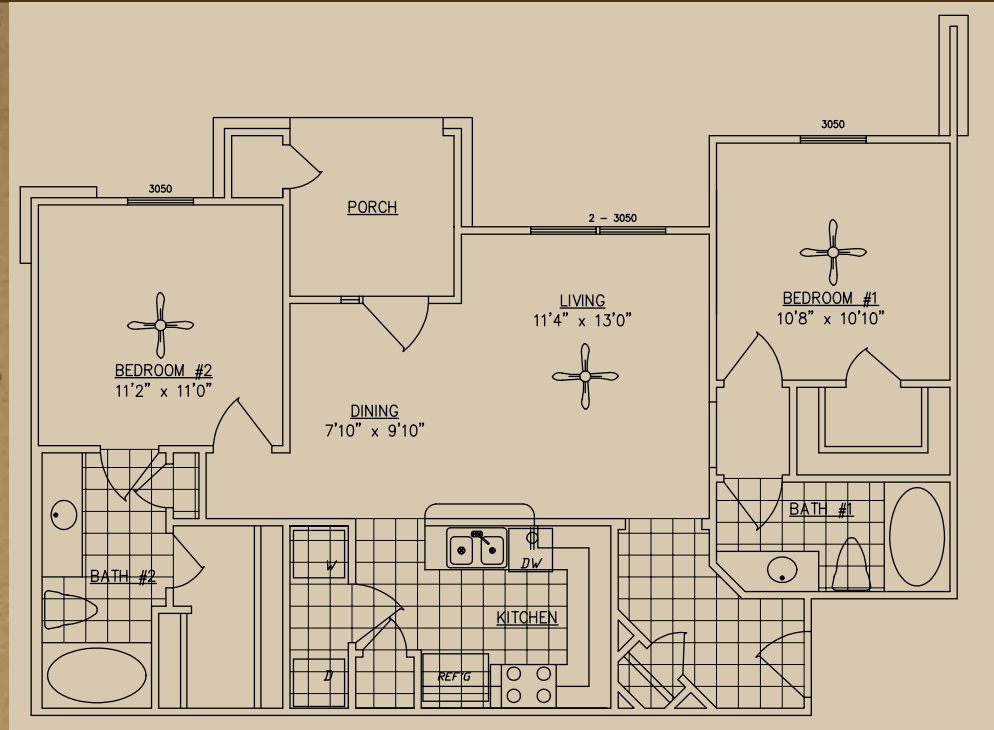
All community features are superlative examples of life at its best. You will find that Pine Creek is the place where you belong.





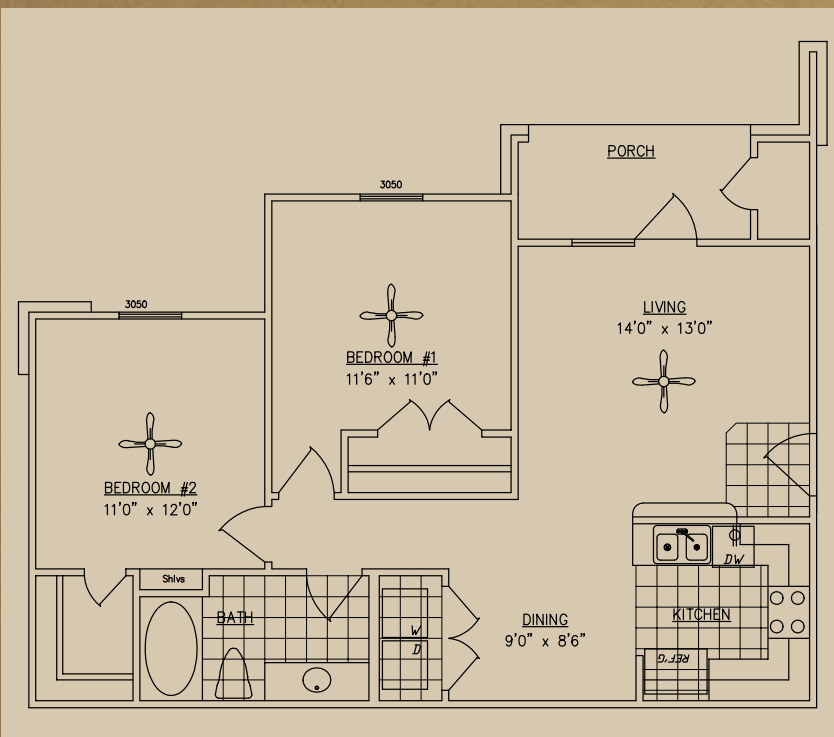
1 BEDROOM  
1 BATH  
731 sqft

Deposit: \_\_\_\_\_  
Rent: \_\_\_\_\_



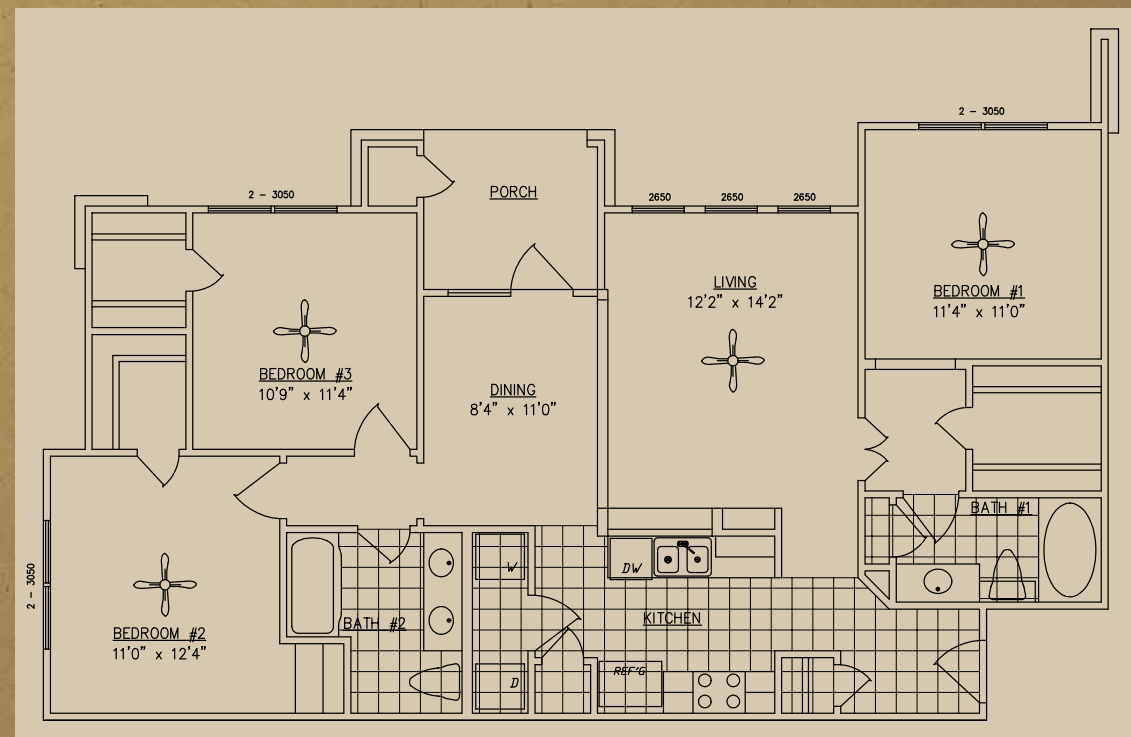
2 BEDROOMS  
2 BATH  
1030 sqft

Deposit: \_\_\_\_\_  
Rent: \_\_\_\_\_



2 BEDROOMS  
1 BATH  
923 sqft

Deposit: \_\_\_\_\_  
Rent: \_\_\_\_\_



3 BEDROOMS  
2 BATH  
1300 sqft

Deposit: \_\_\_\_\_  
Rent: \_\_\_\_\_

Unit # \_\_\_\_\_ Price \$ \_\_\_\_\_

Special offered until \_\_\_\_ / \_\_\_\_ / \_\_\_\_

Date of Showing \_\_\_\_ / \_\_\_\_ / \_\_\_\_

This unit is available starting \_\_\_\_ / \_\_\_\_ / \_\_\_\_

Building # \_\_\_\_\_

Application sent \_\_\_\_ / \_\_\_\_ / \_\_\_\_

Application Fee: *per person over 18 years old*

Date Paid \_\_\_\_ / \_\_\_\_ / \_\_\_\_

Amount Paid \$ \_\_\_\_\_

Pet Fee: *per pet (under 35lbs, limit 2)*

Date Paid \_\_\_\_ / \_\_\_\_ / \_\_\_\_

Amount Paid \$ \_\_\_\_\_

Covered Parking Fee: *per space per month*

# of Spaces Requested \_\_\_\_\_

Other Notes: No cash Payments.

\_\_\_\_\_  
\_\_\_\_\_  
\_\_\_\_\_  
\_\_\_\_\_  
\_\_\_\_\_  
\_\_\_\_\_

## COMMUNITY AMENITIES

- ◇ Gated Community
- ◇ Clubhouse
- ◇ State of the Art Fitness Center
- ◇ Laundry Center
- ◇ Resort Style Pool
- ◇ Limited Access Gates
- ◇ Reserved covered parking (additional charge)
- ◇ Easy Access to Numerous Major Thoroughfares

## INTERIOR FEATURES

- ◇ Full-size Washer/Dryer Connections
- ◇ Linen Storage
- ◇ Pantry\*
- ◇ Ceiling Fans in Living Room / All Bedrooms
- ◇ Designer Lighting Package
- ◇ Microwaves
- ◇ Refrigerator with Ice-maker
- ◇ Walk-in Closets
- ◇ 2" Faux Wood Blinds
- ◇ Built-in Computer Desk\*
- ◇ Built-in Bookshelves\*
- ◇ Oval Garden Tubs
- ◇ Patios & Balconies with Storage Closets

\*In Select Units